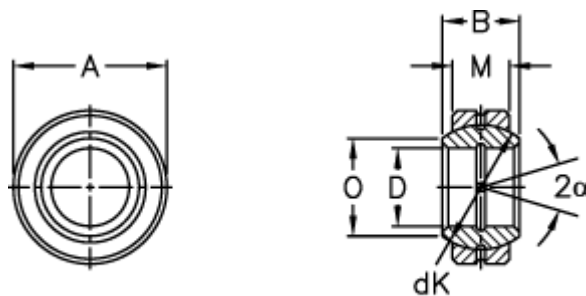


Article number: 03501100

Description: Fluro Rod end GE 100E-2RS

Measures



Str. 6-12 uden smørerille

A	= 150 0 -0,018	Tilt angle = 7
B	= 70	Weight = 4300
D	= 100 0 -0,020	
dK	= 130	
Dynamic load C (kN)	= 610	
M	= 55	
O	= 109.5	
Static load C0 (kN)	= 3050	